

## REMOTE PERFORMANCE MONITOR

Vericor is committed to our customers to monitor, anticipate and resolve operational challenges through our Remote Performance Monitoring (RPM) System. Our RPM allows superior system performance by increasing the engine uptime, improving performance, reducing maintenance costs and capital expenditures, and providing greater reliability, through real-time information and diagnostics.

Vericor's Remote Performance Monitoring System is a resourceful and reliable turbine monitoring system. The collected field data is stored and served within the secure and unlimited Microsoft Azure Cloud, reachable from a web-based interface or mobile application.

## Key Benefits

### 24/7 AVAILABILITY

Accessible global turbine monitoring is available 24/7 through web or mobile device

### REDUCED MAINTENANCE COSTS

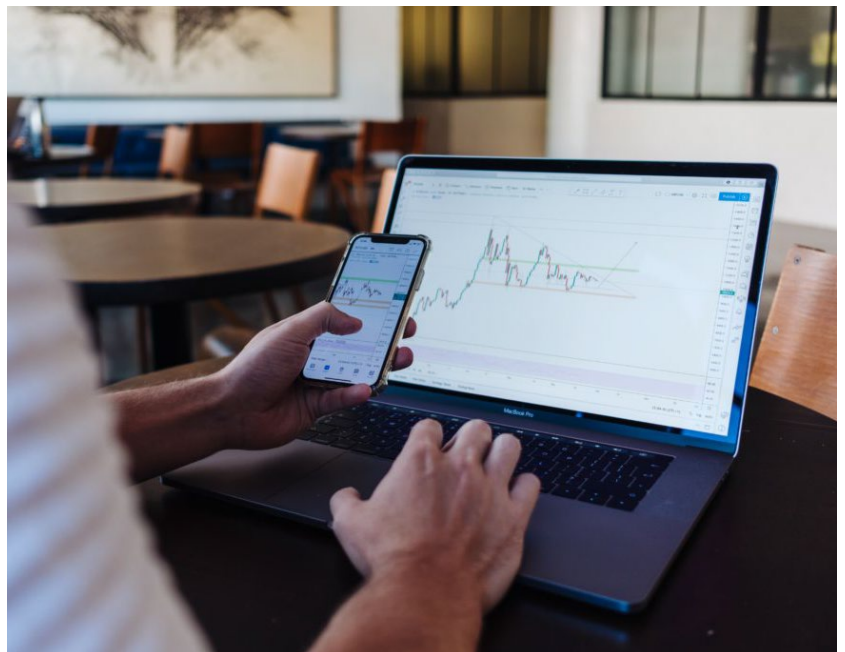
Maintenance costs are reduced through data trending and predictive technologies

### IMPROVED TURBINE PERFORMANCE

Monitoring and diagnostic features help keep your system operating at peak efficiency.

### REDUCED DOWNTIME

RPM helps predict maintenance actions, minimizing the likelihood of unplanned events, keeping your system up and running



# Features and Capabilities



**INCREASED UPTIME**  
Comprehensive turbine readings reduce unplanned maintenance, outages & downtimes.



**PREDICTIVE ANALYTICS**  
Leading to improve turbine reliability, availability, and performance.



**VALUABLE INSIGHTS**  
Generated through the use of long-term performance indicator trending.



**CUSTOMER SAVINGS**  
Through avoidance of unplanned maintenance and costly major repairs.



**CYBERSECURITY PROTECTIONS**  
Multi-layered security built directly into the platform securing all customer data and assets



**REAL-TIME NOTIFICATIONS**  
Instant alerts through SMS or e-mail, providing proactive responses to critical or abnormal trends in turbine performance.



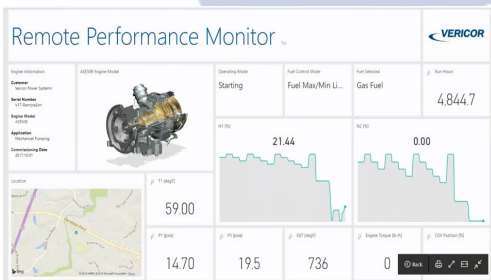
**USER-FRIENDLY DESIGN**  
Simple and easy to use interfaces including dashboards, trends & other visuals.



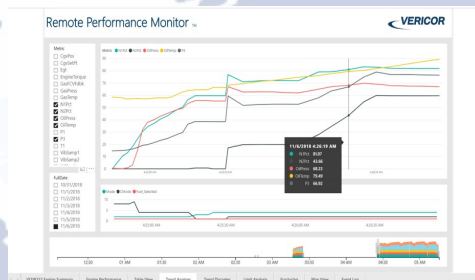
**OPTIMAL CONNECTIVITY**  
Using global cellular data connections, eliminating the need to utilize customer networks for data transmission.



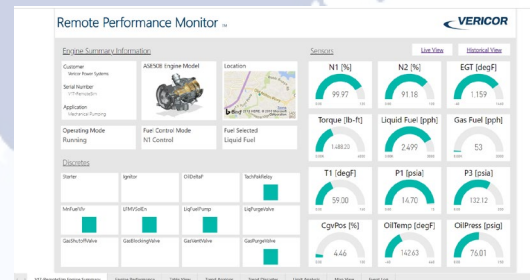
## Remote Monitor Performance



Top Level Performance at a glance.



Trending and Predictive Analysis



Dashboard of individual Key Parameters