



REMOTE *PERFORMANCE MONITOR*

Vericor is committed to our customers to monitor, anticipate, and resolve operational challenges through our Remote Performance Monitoring (RPM) System. Our RPM allows superior system performance by increasing the engine uptime, improving performance, reducing maintenance costs and capital expenditures, and providing greater reliability, through real-time information and diagnostics.

Vericor's Remote Performance Monitoring System is a resourceful and reliable turbine monitoring system. The collected field data is stored and served within the secure and unlimited Microsoft Azure Cloud, reachable from a web-based interface or mobile application.

Key Benefits

24/7 AVAILABILITY

Accessible global turbine monitoring is available 24/7 through web or mobile devices.

REDUCED MAINTENANCE COSTS

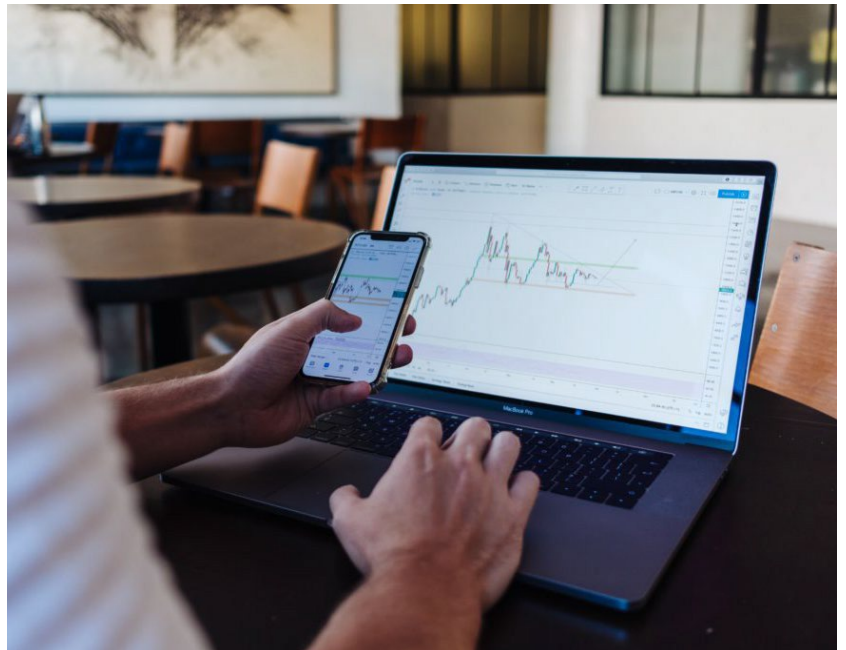
Maintenance costs are reduced through data trending and predictive technologies.

IMPROVED TURBINE PERFORMANCE

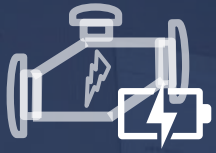
Monitoring and diagnostic features help keep your system operating at peak efficiency.

REDUCED DOWNTIME

RPM helps predict maintenance actions, minimizing the likelihood of unplanned events, and keeping your system up and running.



Features and Capabilities



INCREASED UPTIME

Comprehensive turbine readings reduce unplanned maintenance, outages & downtimes.



PREDICTIVE ANALYTICS

Leading to improve turbine reliability, availability, and performance.



VALUABLE INSIGHTS

Generated through the use of long-term performance indicator trending.



CUSTOMER SAVINGS

Through avoidance of unplanned maintenance and costly major repairs.



CYBERSECURITY PROTECTIONS

Multi-layered security built directly into the Platform securing all customer data and assets.



REAL-TIME NOTIFICATIONS

Instant alerts through SMS or e-mail, providing proactive responses to critical or abnormal trends in turbine performance.



USER-FRIENDLY DESIGN

Simple and easy-to-use interfaces including dashboards, trends & and other visuals.

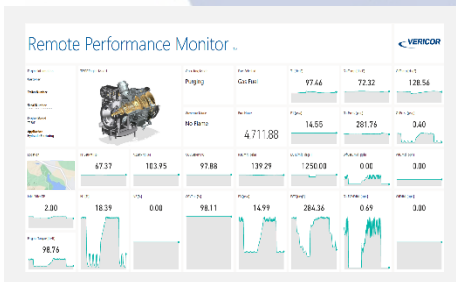


OPTIMAL CONNECTIVITY

Using global cellular data connections, eliminating the need to utilize customer networks for data transmission.



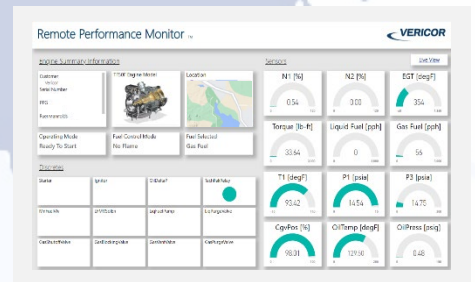
Remote Performance Monitor



Top Level Performance at a glance



Trending and Predictive Analysis



Dashboard of individual Key Parameters